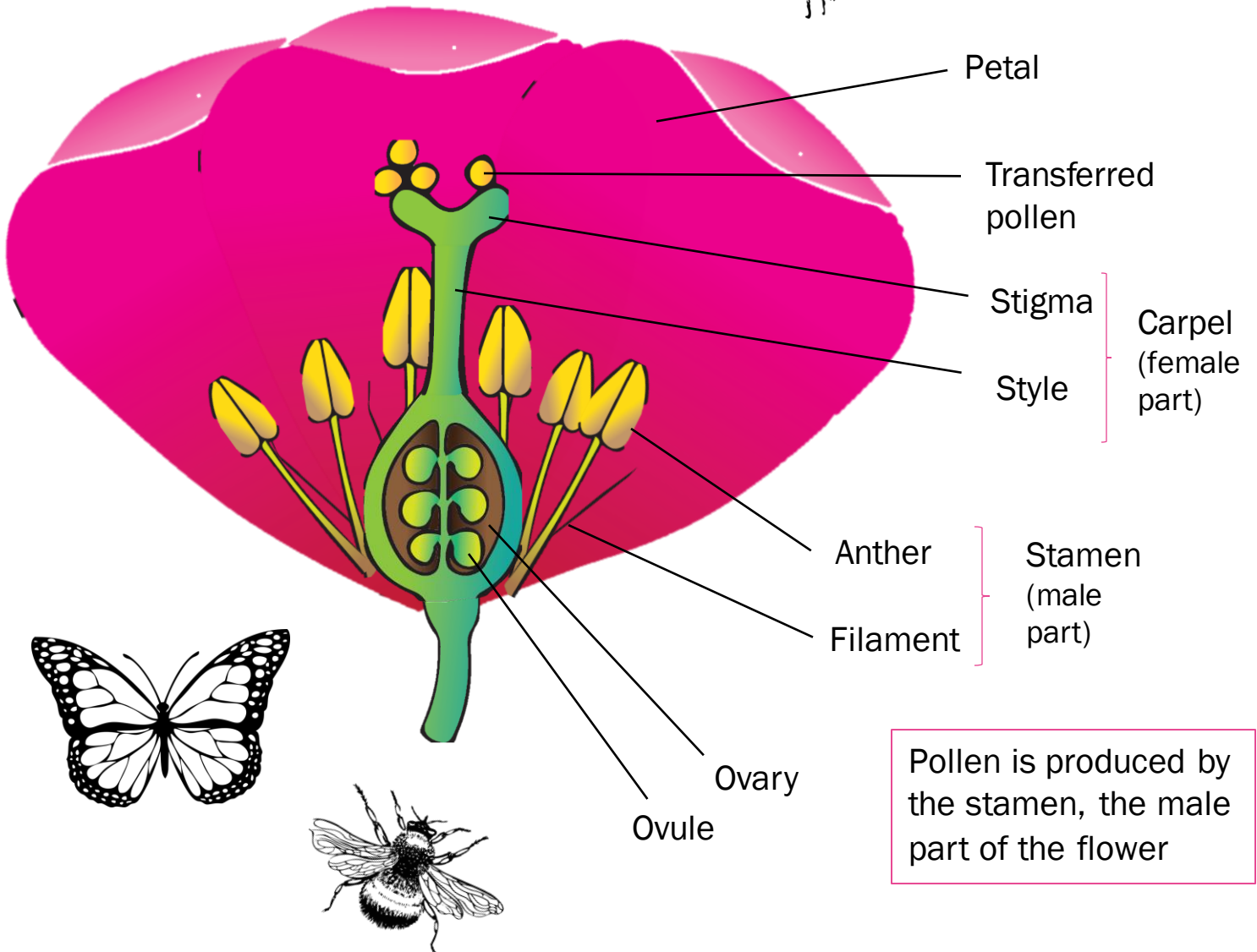


# What is pollination?



Pollen can also be transferred from flower to flower by the wind



Bees, butterflies and other pollinators visit the flower for a drink of sugary nectar

While they're drinking, powdery pollen sticks to them



When they fly to another flower to drink, that pollen sticks to the stigma of the next flower



A long tube grows from the pollen grain down the style to the ovary. When it reaches the ovule, it fertilises it and a seed grows

# What is seed dispersal?

When a seed germinates and a young plant emerges, it needs light, water and space to grow

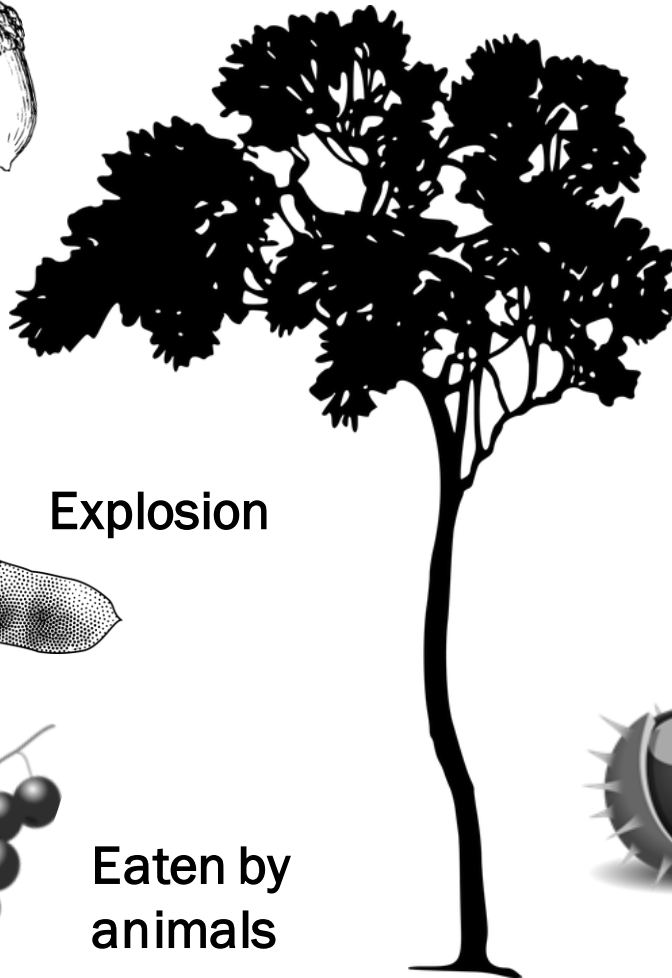


If a seedling sprouts right next to its parent plant, it might not grow very well, or survive at all

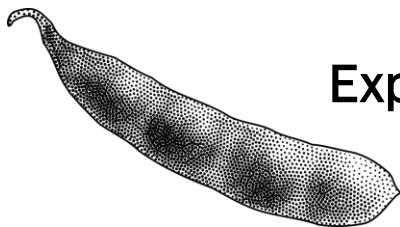
---

Plants have evolved lots of different adaptations to spread their seeds far and wide, giving their seedlings the best chance of survival

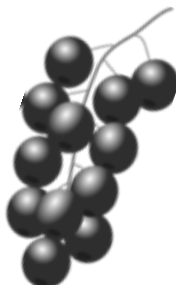
Buried by animals



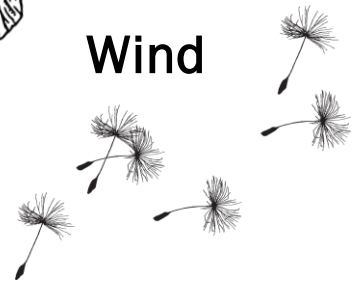
Explosion



Eaten by animals



Wind



Drop and roll

